

Specifications

Features

- Two monitors in one unit
- Graphical user interface

Interfaces

- 2 * V.24/RS.232
- 2 * V.11/RS-422/V.35/V.36 [optional cables needed for V.35/V.36]
- 1 * ISDN BRI
- ISDN channels can be routed to both analysers
- Parallel port for connection to PC

Protocol Decodes

- HDLC-8/128
- SDLC
- SNA
- ISUP
- Q.921
- Q.922
- Q.931
- 1TR6
- V5.1
- X.25
- X.31
- X.75
- Frame Relay
- PPP, CHAP, PAP
- IP
- IPX
- TCP
- PPP/Async

Statistics

- Protocol dependant statistics
- Call based statistics for X.25 and ISDN

Time-stamp

- Resolution 500us

Drivers

- API driver available for developers

Dimensions

- 190 x 138 x 45 mm
- Weight 0.6kg excluding cables

Power

- AC/DC apater
- 110-240V AC In, +5V Out



Protocol Analyser DLA-2

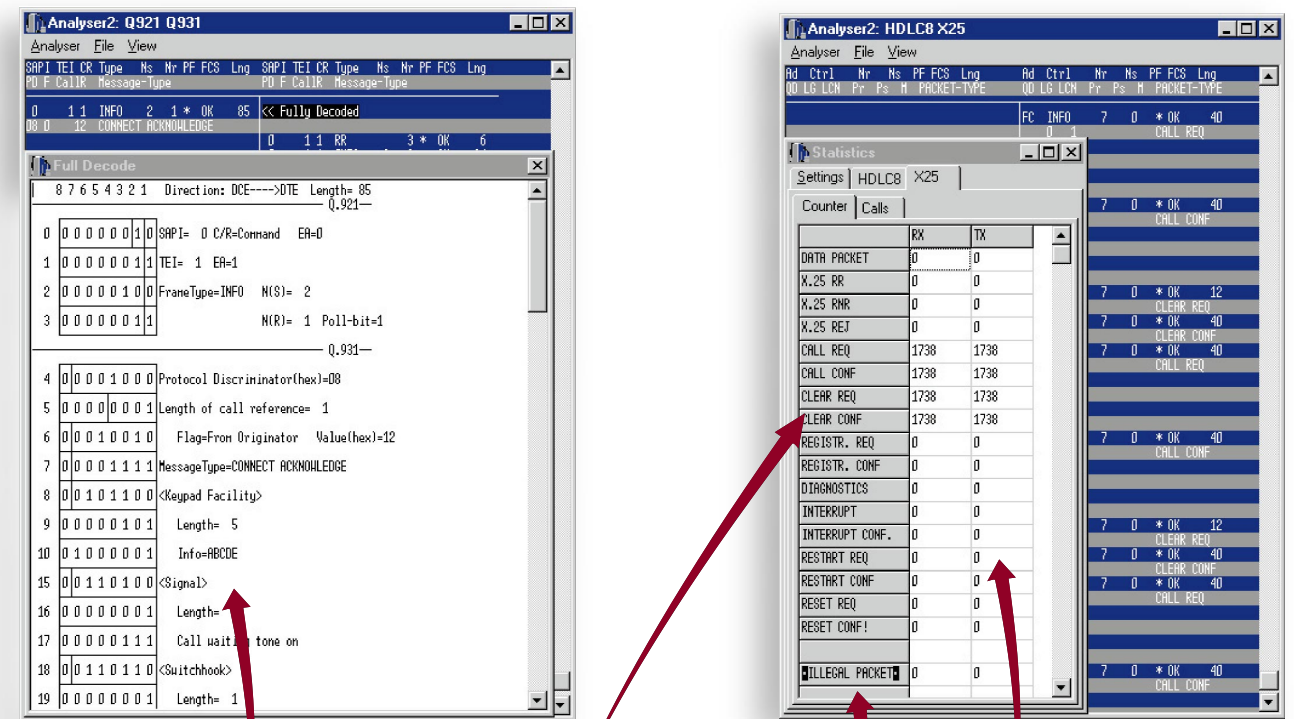
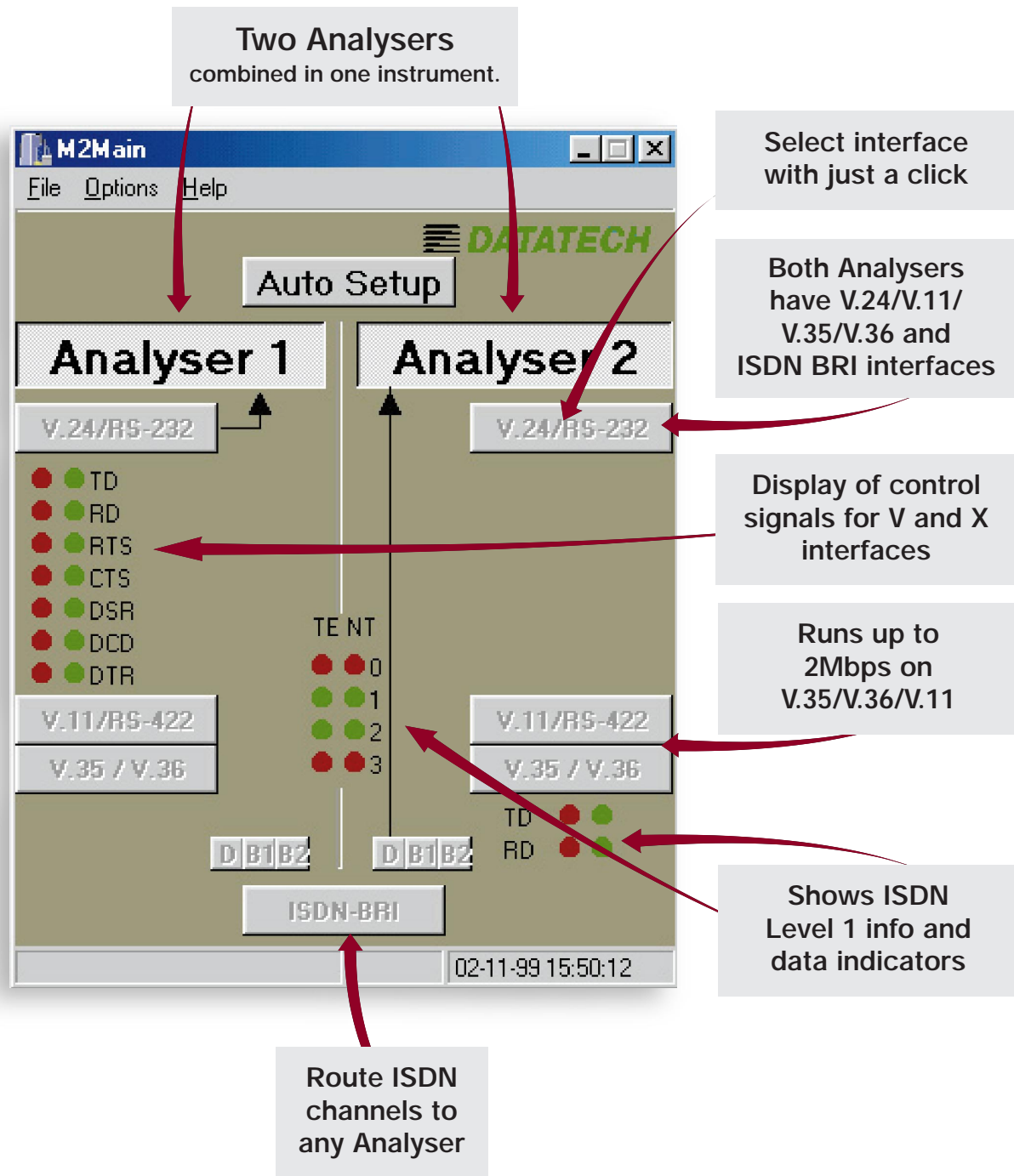


- Two analysers in one unit
- 2 Mbps
- Competitive price
- Detailed decodes
- V.24 / V.11 / V.35 / V.36
- ISDN Basic Rate

DATATECH

DATATECH IPP AB • Aprilvägen 27 • SE-177 61 Järfälla, Sweden
Tel: +46 8 580 196 03 • Fax: +46 8 580 308 21
e-mail: info@datatech.se • Internet: <http://www.datatech.se/>

DATATECH

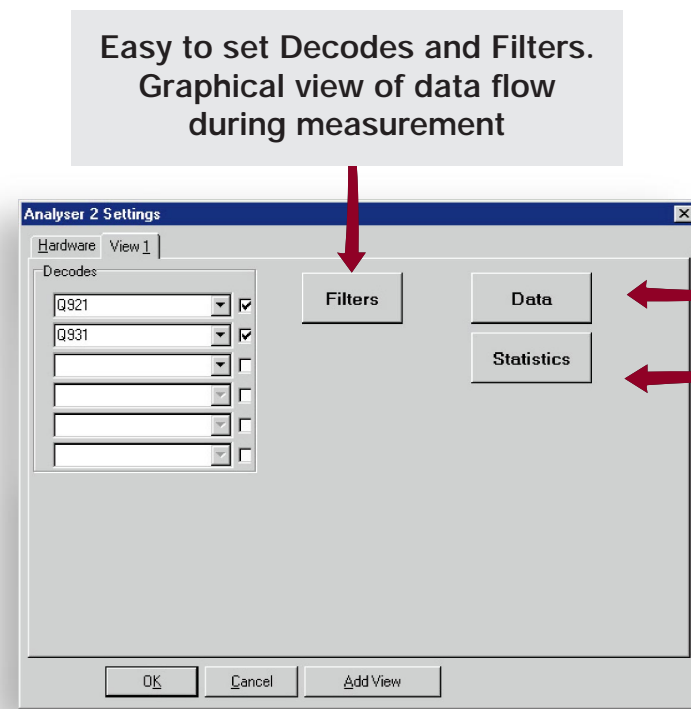


Get familiar with the different protocols by using the Full Decode feature which shows you the frames in full detail.

Counters for each frame /packet type

Statistics for each protocol level

#bytes for each protocol level



Easy to set Decodes and Filters. Graphical view of data flow during measurement

Open multiple Data views of monitored traffic

Get Statistics for data before or after Filters

DLA-2 is a new member of the DLA-M2 protocol analyser series. The new, easy to use, graphical user interface makes it the ideal tool for anyone who wants to become a protocol specialist.

The DLA-2 consists of a small external unit (190 * 138 * 45 mm) that connects to any PC using the parallel port.

All physical interfaces are always available since they are built into the unit. Any desired combination of two interfaces can be used.

Example: Monitor the ISDN D-channel on one Analyser and a B-channel or an HDLC V.35 link with the other.

It's ease of use makes training unnecessary. There is no need to be an expert to use the DLA-2, rather become one by using it!